



EXIMO IACTIVOS®

MANAGEMENT SOFTWARE PREVENTIVE AND CORRECTIVE MAINTENANCE

IACTIVOS IT'S A MANAGEMENT TOOL THAT ALLOWS COMPLETE CONTROL OVER PREVENTIVE AND CORRECTIVE MAINTENANCE, ITS DESIGN IS MAINLY ORIENTED FOR USE IN OIL AND GAS COMPANIES.



TECHNOLOGY

WITHOUT BIG EQUIPMENT INVESTMENTS, NOR EXPENSIVE LICENSES AND BY ONLY HAVING INTERNET CONNECTION, YOUR COMPANY COULD HAVE THIS PREVENTIVE AND CORRECTIVE MANAGEMENT SOFTWARE.





FREQUENTLY ASKED QUESTIONS

WHY CHOOSE EXIMO IACTIVOS TO MANAGE MAINTENANCE OF THE ASSETS OF MY COMPANY?

Unlike other systems that allow management of diverse elements, Eximo IActivos was developed specifically for the Oil and Gas Company maintenance management.

Eximo IActivos develops flexibility and can adapt to the many needs which can come in the daily use of the application.

It features an intuitive and easy to use interface.

WHAT ADVANTAGES DOES EXIMO IACTIVOS GIVES BY BEING A WEB SYSTEM?

Allows immediate visualization over the system stored information from any computer.

It counts with a central database where all the data is gathered.

Installing modifications and updates is quick and transparent to all the application users.

CAN EXIMO IACTIVOS BE LINKED TO THE COMPANY COUNTABLE ADMINISTRATIVE MANAGEMENT SYSTEM?

The technology in which eXimo IActivos was created allows interaction with several other applications through an adequate interface. Thereby it is possible to import and export diverse data such as Material cost, staff, Dealers, etc.

DOES THE PRODUCT HAVE HELP DESK?

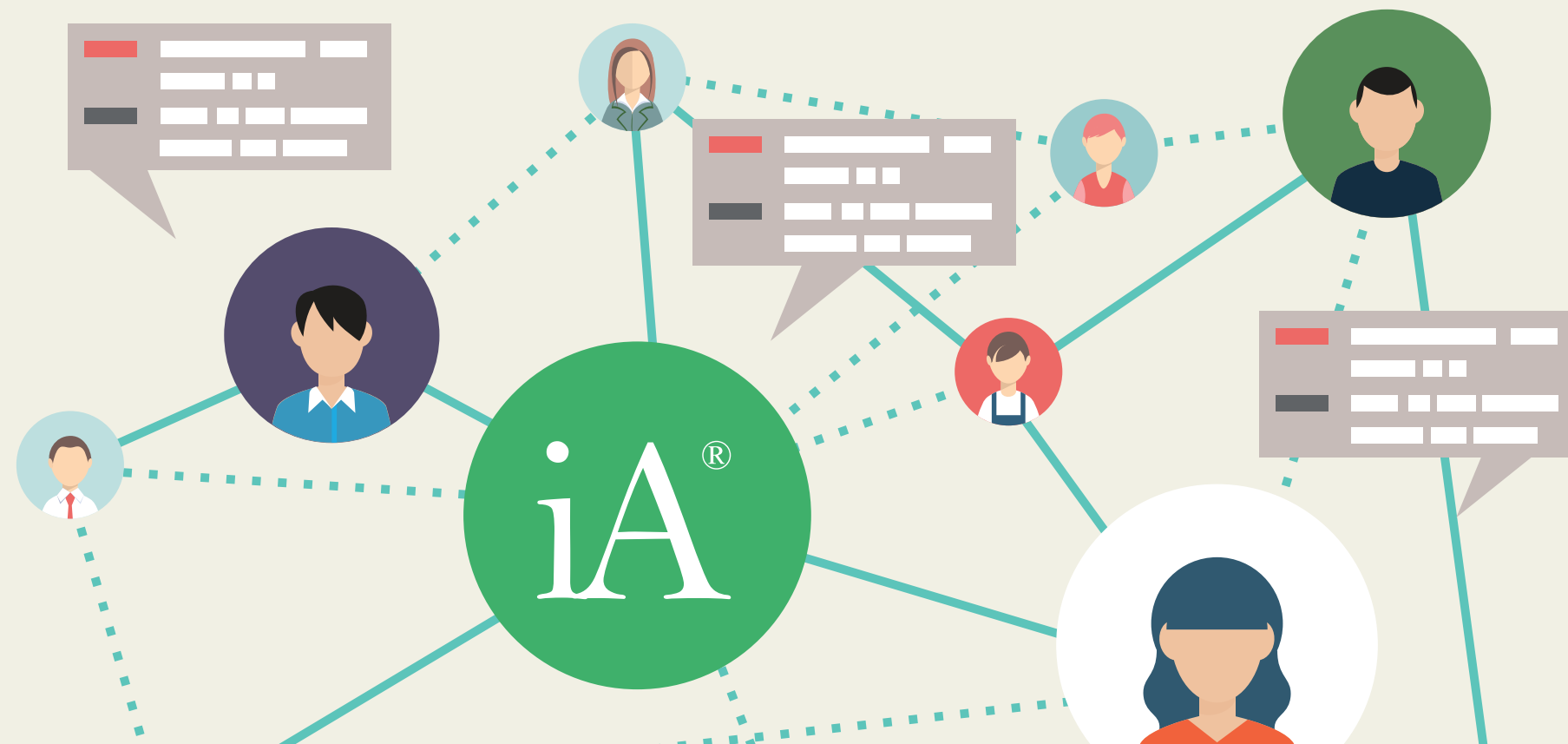
By customer request it could be possible to establish a support and maintenance service like the one that currently have all the eXimo products.

CAN I GET REPORTS THROUGH EXIMO IACTIVOS AND EXPORT THEM TO MS EXCEL?

eXimo IActivos was designed in such a way that allows all the reports on-screen could be exported to EXCEL in just one click.

CAN THE SOFTWARE BE CUSTOMIZED BY USER DEMANDS?

This product, like all eXimo developed products, is customization feasible both by user request or additional requirements.



GOODS

Goods identification.

Features (Model, brand, fabrication date, etc).

Active movements between different cost centers.

Ability to know the real localization along movement history of each good.

DAILY REPORTS

Routine planning.

Supplies requirements projections by date.

Projected staff necessities for applied work.

LUBRICATION ROUTINES

Monitoring tools for Lubrication routines.

REPORTS

Assets

Element movements.

Assigned operation hours.

Oil consumptions.

Supplies, activities, tools, type of elements, dealers, rigs, systems, work staff.

Maintenance routines.

Planned vs Executed.

Maintenance order status.

Details of input costs - tools - own labor - outsourced labor for maintenance order performed.

MAINTENANCE ROUTINES

Maintenance and preventive routine creation.

Frequency execution details.

Task list fulfill .

Staffing requirements and elements for the tasks.

Assets routine associations .

Routine execution expenses calculus.

MODULES



GERMANY
ITALY
EEUU
MÉXICO
VENEZUELA
COLOMBIA
PERÚ
BRAZIL
CHILE
ARGENTINA



iA[®]   
EXIMO IACTIVOS[®]
IN THE WORLD



SOLDADO DESCONOCIDO 441 / NQN / ARG
TEL/FAX +54 (299) 4425462/4474827
INFO@EXIMO.COM.AR / EXIMO.COM.AR

