



## EXIMO ICARRIER®

MANAGEMENT IN TRANSPORTATION, LOGISTICS AND DTM SOFTWARE

EXIMO ICARRIER IS A SOFTWARE THAT ALLOWS INTEGRAL TRANSPORT AND UTM (UNMOUNTING-TRANSPORT AND MOUNTING) MANAGEMENT OF GAS & OIL INDUSTRY TOWER RIGS.

IT'S ORIENTED MAINLY TO COVER THE NEEDS OF TOWERING COMPANIES.

ALLOWS TIME MEASUREMENT AND EXPENSES MANAGEMENT IN COMPANY FLEET AND IN THIRD PARTIES.



# TECHNOLOGY

WITHOUT BIG EQUIPMENT INVESTMENTS, OR EXPENSIVE LICENSES AND BY ONLY HAVING INTERNET CONNECTION, YOUR COMPANY COULD HAVE THIS TRANSPORT LOGISTIC AN UTM MANAGEMENT SOFTWARE.





## FREQUENTLY ASKED QUESTIONS

### WHY CHOOSE EXIMO ICARRIER FOR AN OIL COMPANY TRANSPORT AND UTM MANAGEMENT?

In contrary to other generic systems, eximo ICarrier is designed specifically by taking previous experience from our big tower company logistics and transportation areas professionals.

It has specific points which allow detailed analysis of UTM results in order to make measures and correct deviations in this crucial matter for success.

### WHAT ADVANTAGES DOES EXIMO ICARRIER GIVES BY BEING A WEB SYSTEM?

Allows immediate visualization over the system stored information from any computer.

It counts with a central database where all the data is gathered. Installing modifications and updates is quick and transparent to all of the application users.

### **CAN EXIMO ICARRIER BE LINKED TO THE COMPANY COUNTABLE ADMINISTRATIVE MANAGEMENT SYSTEM?**

The technology in which eXimo ICARRIER was created allows interaction with several other applications through an adequate interface. This way it is possible to import and export diverse data such as Material cost, personnel, Dealers, etc.

### **DOES THE PRODUCT HAVE HELP DESK?**

By customer request it could be possible to establish a support and maintenance service like the one that currently have all the eXimo products.

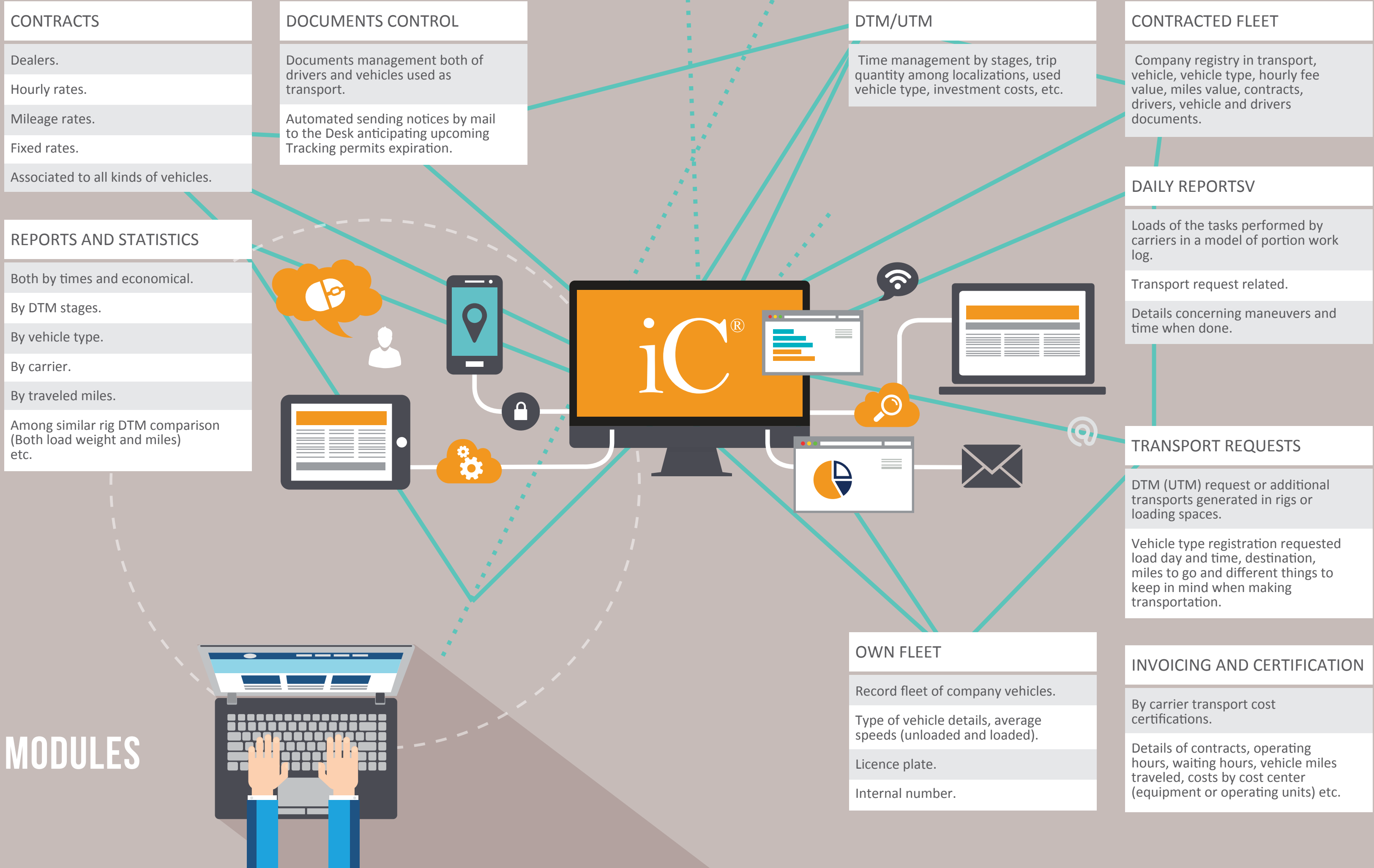
### **CAN I GET REPORTS THROUGH EXIMO ICARRIER AND EXPORT THEM TO MS EXCEL?**

eXimo ICARRIER was designed in such a way that allows for all the reports on-screen can be exported to EXCEL in just one click.

### **CAN THE SOFTWARE BE CUSTOMIZED BY USER DEMANDS?**

This product, like all eXimo developed products, is customization feasible both by user request or additional requirements.





**CONTRACTS**

Dealers.  
Hourly rates.  
Mileage rates.  
Fixed rates.  
Associated to all kinds of vehicles.

**DOCUMENTS CONTROL**

Documents management both of drivers and vehicles used as transport.  
Automated sending notices by mail to the Desk anticipating upcoming Tracking permits expiration.

**DTM/UTM**

Time management by stages, trip quantity among localizations, used vehicle type, investment costs, etc.

**CONTRACTED FLEET**

Company registry in transport, vehicle, vehicle type, hourly fee value, miles value, contracts, drivers, vehicle and drivers documents.

**REPORTS AND STATISTICS**

Both by times and economical.  
By DTM stages.  
By vehicle type.  
By carrier.  
By traveled miles.  
Among similar rig DTM comparison (Both load weight and miles) etc.

**DAILY REPORTSV**

Loads of the tasks performed by carriers in a model of portion work log.  
Transport request related.  
Details concerning maneuvers and time when done.

**TRANSPORT REQUESTS**

DTM (UTM) request or additional transports generated in rigs or loading spaces.  
Vehicle type registration requested load day and time, destination, miles to go and different things to keep in mind when making transportation.

**OWN FLEET**

Record fleet of company vehicles.  
Type of vehicle details, average speeds (unloaded and loaded).  
Licence plate.  
Internal number.

**INVOICING AND CERTIFICATION**

By carrier transport cost certifications.  
Details of contracts, operating hours, waiting hours, vehicle miles traveled, costs by cost center (equipment or operating units) etc.

**MODULES**

ARGENTINA



iC<sup>®</sup>     
**EXIMO ICARRIER<sup>®</sup>**  
**IN THE WORLD**

   
**GESTIÓN DE LA CALIDAD**  
R.I. 9000-4456

SOLDADO DESCONOCIDO 441 / NQN / ARG  
TEL/FAX +54 (299) 4425462/4474827  
INFO@EXIMO.COM.AR / EXIMO.COM.AR

 **CONSULTORA EN SISTEMAS**